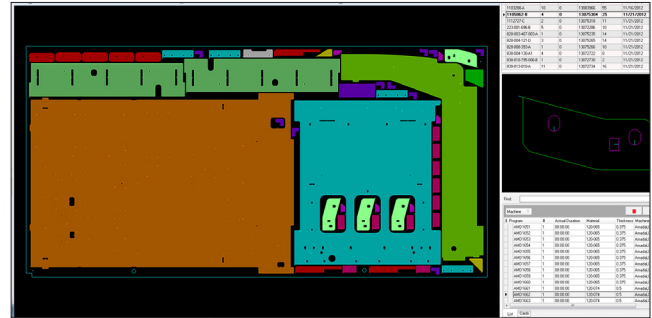


SigmaNEST® Color Offload™

Mixing work orders saves time and material, but also creates the potential for error when unloading and sorting parts. Color Offload eliminates confusion by color-coding and displaying parts grouped with the orders to which they belong. At the same time the machine operator has the ability to flag parts that may have cut quality issues. Substandard parts are rejected and automatically rescheduled for future nests.



Automated

- ▶ Assigns distinct group colors to each nest containing multiple work orders for clear visual inspection
- ▶ Graphically indicates rejected part(s)
- ▶ Updates work assignments
- ▶ Returns rejected part(s) to the order system for recutting

Operation

- ▶ Operates on a shop floor network PC
- ▶ Works in conjunction with Job Tracking / Scheduling modules (MX1400)
- ▶ Requires installation of the SimTrans™ Work Order Completion module

Features and Benefits

- ▶ Simplifies part identification and sorting by assigning unique groups
- ▶ Automatically returns rejected part(s) data to the order system for recutting
- ▶ Option to add comments/notes to rejected parts
- ▶ Report listing details on completed work orders and rejected parts
- ▶ A simple interface that is easy to use
- ▶ Option for a paperless process with integration of SigmaNEST e-Reports
- ▶ Label printing for individual parts
- ▶ Update inventory with Edit Sheet function allowing operator to swap to actual heat number used on the floor
- ▶ Quickly search program lists to find programs
- ▶ Track actual program duration with manual start, stop, and pause buttons
- ▶ Part detail/dimensions viewing panel
- ▶ Touch-screen compatible
- ▶ Interfaces with SigmaNEST® Load Manager™ for scheduling flexibility